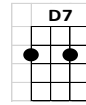
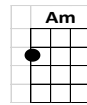
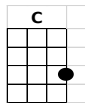
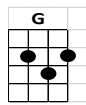


Leaving On A Jet Plane



(COME IN)

INTRO: G Am D7 //// ////
Oh babe, I hate to go

G C
All my bags are packed I'm ready to go.

G C
I'm standing here outside your door.

G Am D7 //// ////
I hate to wake you up to say good bye.

G C
But the dawn is breaking it's early morn.

G C
The taxi's waitin he's blow'in his horn.

G Am D7 //// ////
Already I'm so lonesome I could die.

G C G C
So kiss me and smile for me. Tell me that you'll wait for me.

G Am D7 //// ////
Hold me like you'll never let me go.

G C G C G
I'm leavin on a jet plane. Don't know when I'll be back again.

Am D7 //// ////
Oh, babe I hate to go.

G C
There's so many times I've let you down.

G C
So many time I've played around.

G C D7 //// ////
I tell you now they don't mean a thing.

G C G C
Every place I go I'll think of you. Ev'ry song I sing I'll sing for you.

G C D7 //// ////
When I come back I'll wear your wedding ring.

Leaving On A Jet Plane - pg. 2

G C G C
So kiss me and smile for me. Tell me that you'll wait for me.

G Am D7 //// ////

Hold me like you'll never let me go.

G C
Now the time has come to leave you.

G C
One more time let me kiss you.

G C D7 //// ////

Then close your eyes I'll be on my way.

G C
Dream about the days to come.

G C
When I won't have to leave alone.

G C D7 //// ////

About the time I won't have to say...

G C G C G
I'm leavin on a jet plane. Don't know when I'll be back again.

C D //// /

(SLOW) Oh, babe, I hate to go.